



Baker Atlas



FILE NO:	COMPANY	VULCAN MINERALS INC.
API NO:	WELL	VULCAN INVESTCAN RED BROOK #2
	FIELD	BAY ST.GEORGE BASIN
	PROVINCE	NEWFOUNDLAND AND LABRADOR
Ver. 3.87	LOCATION:	
UID:		OTHER SERVICES ZDL-CN-GR-XYCAL XMAC-GR-CAL, CYL DSL
LICENSE:	BH LOC. LSD:	
ADW 2009-116-03-	LAT 48.2679591667	LONG -58.7501141667
PERMANENT DATUM	G.L.	ELEVATION 55.5 M
LOG MEASURED FROM	K.B.	6.3 M ABOVE P.D.
DRILL MEAS. FROM	KELLY BUSHING	
		ELEVATIONS: KB 61.8 M DF GL 55.5 M

DATE		09-NOV-2009		
RUN	TRIP	1	2	
SERVICE ORDER		CA206497		
DEPTH DRILLER		889.0 M		
DEPTH LOGGER		888.2 M		
BOTTOM LOGGED INTERVAL		883.9 M		
TOP LOGGED INTERVAL		220.2 M		
CASING DRILLER		339.7 MM		② 220.2 M
CASING LOGGER		220.2 M		
BIT SIZE		311.0 MM		
TYPE OF FLUID IN HOLE		BRINE		
DENSITY	VISCOSITY	1240.0 G/L	69.0 S	
PH	FLUID LOSS	10.8	18.4 ML	
SOURCE OF SAMPLE		TOOL MEASURED		
RM AT MEAS. TEMP.		0.07 OHMM	② 21.0 DEGC	②
RMF AT MEAS. TEMP.		0.06 OHMM	② 21.0 DEGC	②
RMC AT MEAS. TEMP.		0.08 OHMM	② 21.0 DEGC	②
SOURCE OF RMF	RMC	CALCULATED	CALCULATED	
RM AT BHT		0.07 OHMM	② 19.9 DEGC	②
TIME SINCE CIRCULATION		13.5 HOURS		
MAX. RECORDED TEMP.		20.1 DEGC		
EQUIP. NO.	LOCATION	4126	OH SARNIA	
RECORDED BY		D.SHKOLNIKOV		
WITNESSED BY		M.SMITH		

IN MAKING INTERPRETATIONS OF LOGS OUR EMPLOYEES WILL GIVE CUSTOMER THE BENEFIT OF THEIR BEST JUDGEMENT. BUT SINCE ALL INTERPRETATIONS ARE OPINIONS BASED ON INFERENCES FROM ELECTRICAL OR OTHER MEASUREMENTS, WE CANNOT, AND WE DO NOT GUARANTEE THE ACCURACY OR CORRECTNESS OF ANY INTERPRETATION. WE SHALL NOT BE LIABLE OR RESPONSIBLE FOR ANY LOSS, COST, DAMAGES, OR EXPENSES WHATSOEVER INCURRED OR SUSTAINED BY THE CUSTOMER RESULTING FROM ANY INTERPRETATION MADE BY ANY OF OUR EMPLOYEES.

BOREHOLE RECORD		
BIT SIZE	FROM	TO
444.5 MM	0.0 M	220.2 M
311.0 MM	220.2 M	889.0 M

CASING RECORD				
SIZE	WEIGHT	GRADE	FROM	TO
339.7 MM	71.4 KG/M	J-55	0.0 M	220.2 M

REMARKS

RUN 1 TRIP 2 : TIME STOPPED CIRCULATION: 09-NOV-2009 08:10 PM

DLL LOGGED IN ENHANCED MODE.
FORMATION RESISTIVITY IN MOST LOGGING INTERVAL ABOVE TOOL SPECIFICATIONS.
RIG: STONEHAM #11

CREW: D.SHKOLNIKOV, D.KIRWAN, S.ZEMAN

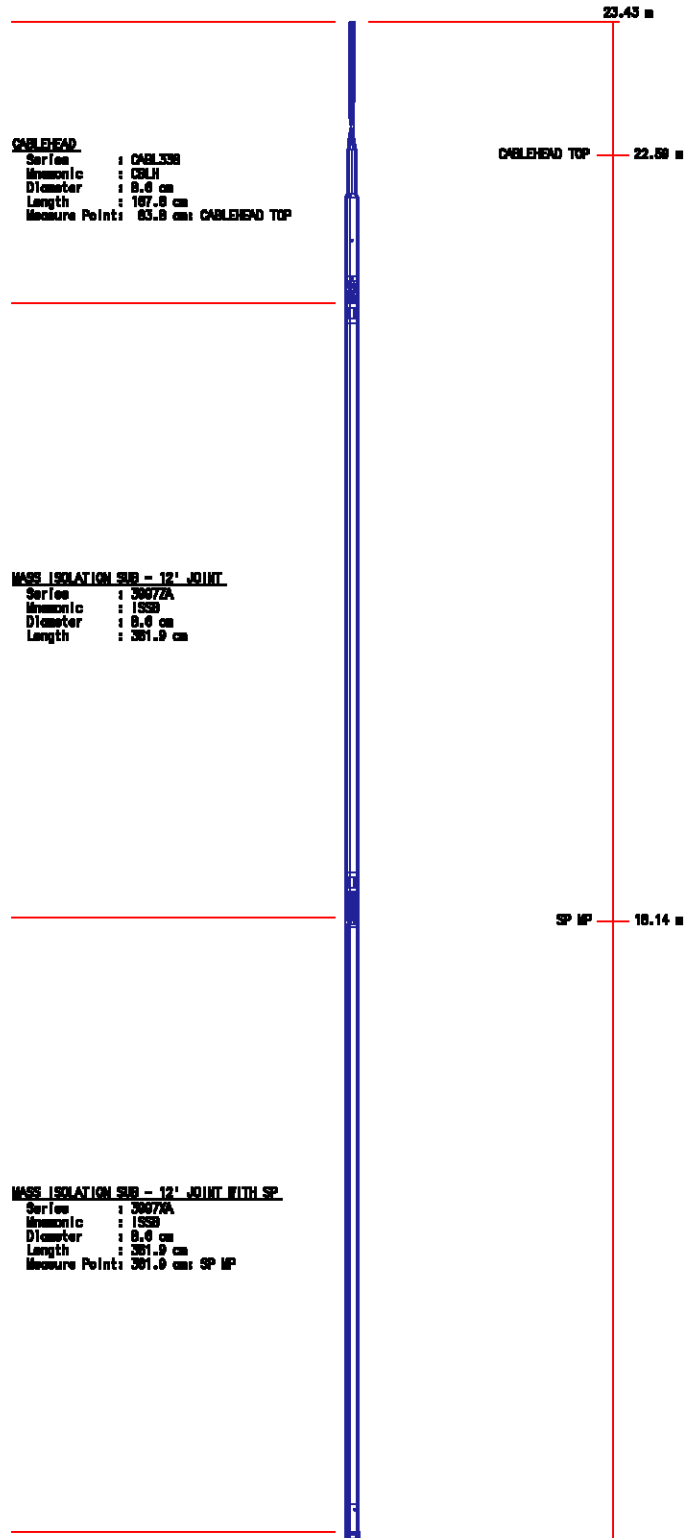
EQUIPMENT DATA

RUN	TRIP	TOOL	SERIES NO.	SERIAL NO.	POSITION
1	2	FOCUS SWIVE	3950XA	10128472	FREE
1	2	TTMA SUB	3980XA	402454	FREE
1	2	2 ARM CAL	4410XA	101731015	FREE

1	2	Z-ARM CAL	4410XA	10171013	FREE
1	2	DBL KNIT	3931XA	10216109	FREE
1	2	COMM/POWER	3518FB	10395839	DECENTRALIZED
1	2	COMM/GR	3518EB	10386766	DECENTRALIZED
1	2	FOCUS CN	2436XA	402534	DECENTRALIZED
1	2	FOCUS ZDEN	2223XA	10130454	PAD DEVICE

INSTRUMENT CONFIGURATION

Source File: /dat1a/pass/vul_rb2/k773v--tdg



WTS COMMON REMOTE
Series : 3514XB
Mononic : WTS
Diameter : 9.2 cm
Length : 194.0 cm

DIGITAL SPECTRALOG
Series : 1328XA
Mononic : DSL
Diameter : 9.2 cm
Length : 222.8 cm
Measure Point: 46.8 cm: GR MP

GR MP 10.84 m

ISOLATION RETURN SUB
Series : 3062XA
Mononic : ISSB
Diameter : 9.2 cm
Length : 63.5 cm

SLAM ADAPTER
Series : 3516XA
Mononic : SLAM
Diameter : 8.6 cm
Length : 100.7 cm

ISOLATION RETURN SUB
Series : 3067XB
Mononic : ISSB
Diameter : 9.2 cm
Length : 66.7 cm

DUAL LATERALS HI-TEMP ELECTRONICS
Series : 1238XA
Mononic : DLS
Diameter : 8.6 cm
Length : 187.3 cm

DUAL LATERALS MANDEL
Series : 1238XA
Mononic : DLS
Diameter : 9.2 cm
Length : 257.8 cm
Measure Point: 179.1 cm: RS/RO MP

RS/RO MP 3.86 m

GEOMAX.DAT
 Series : 13000A
 Harmonic : GR
 Diameter : 9.2 cm
 Length : 188.4 cm
 Measure Point: 40.6 cm: GR MP

GR MP 0.48 m

BAL PLUG 3 3/8

0.00 m

TOTAL LENGTH: 25.43 m
 TOTAL WEIGHT: 477.3 kg
 MAX DIAMETER: 10.8 cm

MAIN LOG

ECLIPS 6.0i Feb 21, 2008
 Updates: 1

Tue Nov 10 11:30:50 2009

Perplt /main/62

Cplot

Pdf_Cpp /main/16

Fileview 5.42

PARAMETER AND FILTER SUMMARY REPORT

FILE: /data/pass/vul_rb2/k740d02.prm
 LOGGING MODE: DEPTH DIRECTION: UP
 TOP DEPTH: 181.889 m BOTTOM DEPTH: 890.827 m

SYMMETRIC FILTER

MEASUREMENT TYPE	PARAMETER	VALUE	UNITS	INTERVAL (m)	
TENSION	FILTER ()	medium (1)		TOP	BOTTOM
GR	FILTER ()	medium (1)		"	"

BOREHOLE & CEMENT

MEASUREMENT TYPE	PARAMETER	VALUE	UNITS	INTERVAL (m)	
BIT SIZE	BIT SIZE	311.000	mm	TOP	BOTTOM

PARAMETER AND FILTER SUMMARY REPORT

FILE: /data/pass/vul_rb2/k773v02.prm
 LOGGING MODE: DEPTH DIRECTION: UP
 TOP DEPTH: 212.293 m BOTTOM DEPTH: 891.779 m

SYMMETRIC FILTER

MEASUREMENT TYPE	PARAMETER	VALUE	UNITS	INTERVAL (m)	
TENSION	FILTER ()	medium (1)		TOP	BOTTOM
GR	FILTER ()	medium (1)		"	"
DLL	FILTER ()	medium (1)		"	"

BOREHOLE & CEMENT

MEASUREMENT TYPE	PARAMETER	VALUE	UNITS	INTERVAL (m)	
BIT SIZE	BIT SIZE	311.000	mm	TOP	BOTTOM
MUD SAMPLE RESISTIVITY	MUD SAMPLE TEMP	19.9	degC	"	"
	MUD SAMPLE RES	0.070	ohm.m	"	"
BOREHOLE TEMP from GRADIENT	Known BH REF TEMP	19.9	degC	"	"
	at BH REF DEPTH	300.0	m	"	"
	with TEMP GRADIENT	0.365	0.01 degC/m	"	"
BOREHOLE CORR DIAMETER SOURCE	CALIPER/FIXED DIA. (dlbh*)	USE FIXED SIZE		"	"
BOREHOLE CORR DIAMETER	FIXED DIAMETER (dlbh*)	311.000	mm	"	"
BH MUD RESISTIVITY SOURCE	RMD SOURCE	MUD SAMP DERIVED		"	"

DLL PROCESSING				
MEASUREMENT TYPE	PARAMETER	VALUE	UNITS	INTERVAL (m)
DLL BOREHOLE CORRECTION	BOREHOLE CORR	OFF		TOP BOTTOM
	DEEP TYPE	ENHANCED		" "
	SHALLOW TYPE	ENHANCED		" "
	TOOL POSITION	CENTRALIZED		" "
	DEEP CURRENT RTN.	STANDARD		" "
	ARMOR ISOLATOR	DUAL 12' ISOLATORS		" "
	GRONINGEN RTN. DIST	40 FT RETURN		" "

PARAMETER AND FILTER SUMMARY REPORT

File:	/dat1a/pass/vul_rb2/k970a03.prm			
LOGGING MODE:	DEPTH	DIRECTION:	UP	
TOP DEPTH:	198.044 m	BOTTOM DEPTH:	892.059 m	

SYMMETRIC FILTER				
MEASUREMENT TYPE	PARAMETER	VALUE	UNITS	INTERVAL (m)
CHT	FILTER ()	medium (1)		TOP BOTTOM
GR MED RES	FILTER ()	medium (1)		" "
TENSION	FILTER ()	medium (1)		" "

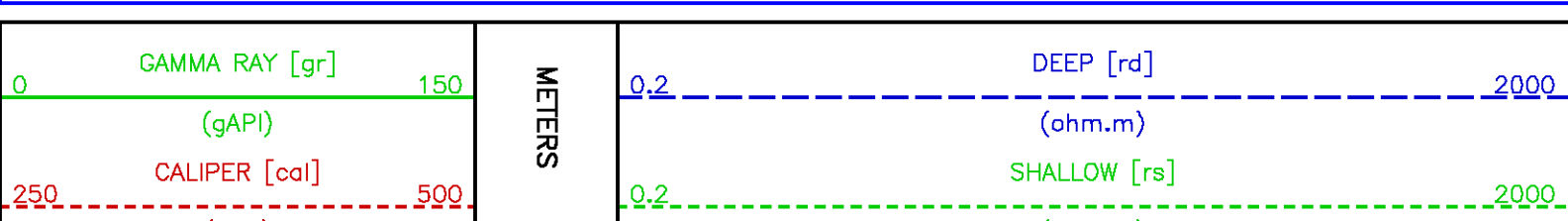
BOREHOLE & CEMENT				
MEASUREMENT TYPE	PARAMETER	VALUE	UNITS	INTERVAL (m)
X-Y COMBINED CALIPER PROCESSING-FOCM5Y	Caliper - FOCUS	X-Axis		TOP BOTTOM
BIT SIZE	BIT SIZE	311.000	mm	" "

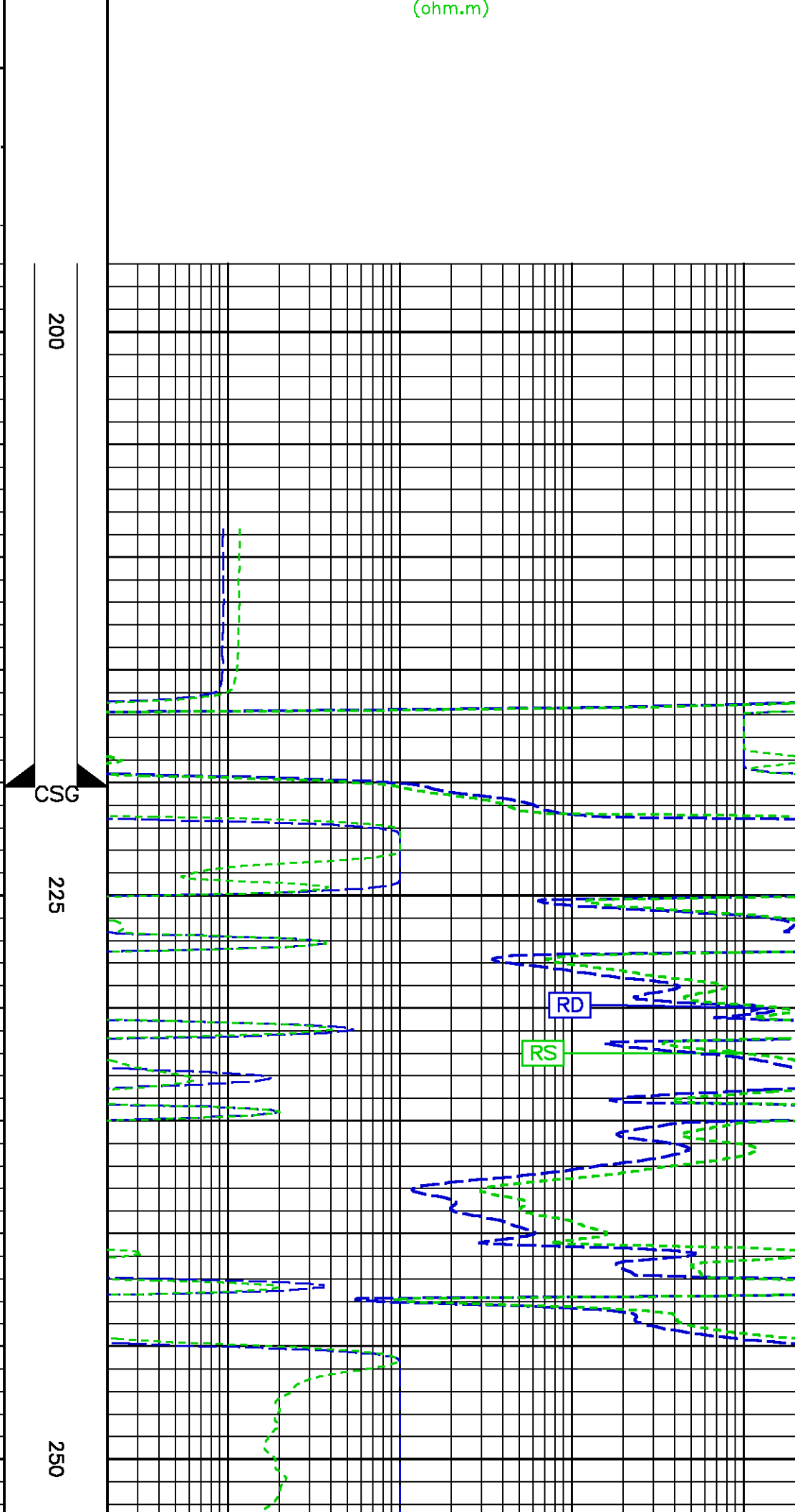
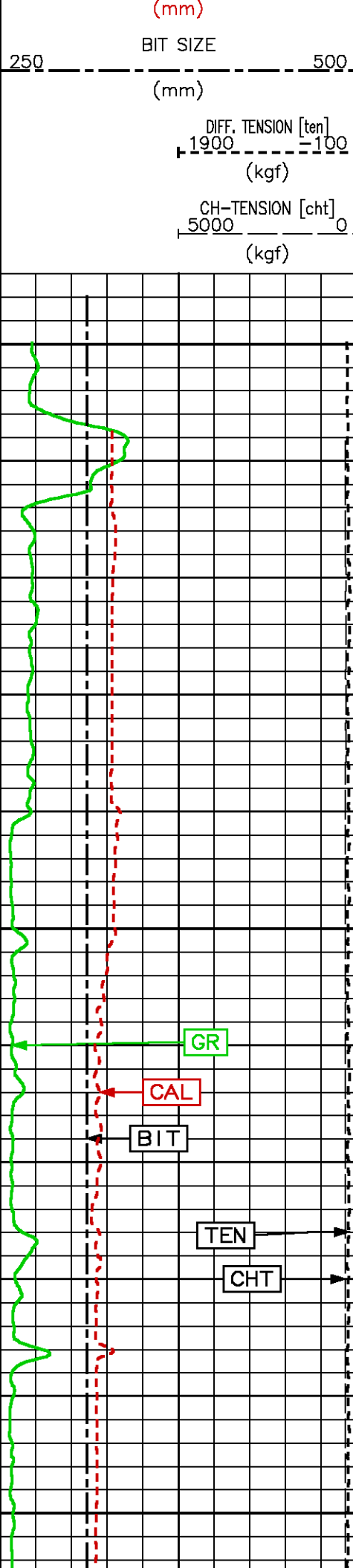
ACCELERATION PROCESSING				
MEASUREMENT TYPE	PARAMETER	VALUE	UNITS	INTERVAL (m)
ACCEL CORR SWITCH	ACCEL DEPTH CORR	CORRECTION ON		TOP BOTTOM

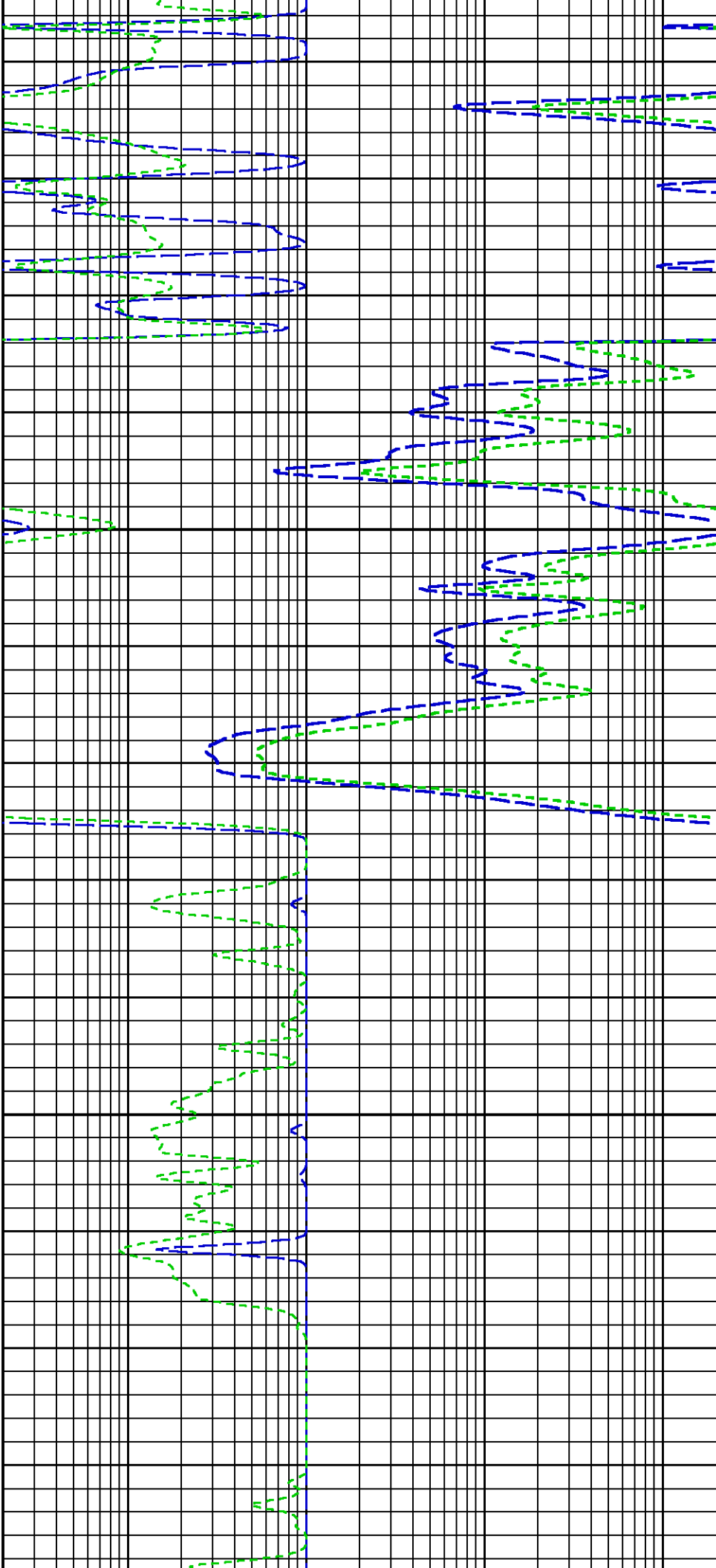
CURVE DESCRIPTION REPORT				
CURVE NAME	CURVE ALIAS	CREATION DATE	CURVE DESCRIPTION	
F1:BIT	BIT	Nov 10 03:05:18 2009	BIT SIZE	
F1:CAL	CAL	Nov 10 06:58:51 2009	CALIPER	
F1:CHT	CHT	Nov 10 06:58:51 2009	CABLE HEAD TENSION	
F1:GR	GR	Nov 10 03:05:18 2009	GAMMA RAY	
F1:RD	RD	Nov 10 09:42:41 2009	DEEP RESISTIVITY	
F1:RS	RS	Nov 10 09:42:41 2009	SHALLOW RESISTIVITY	
F1:TEN	TEN	Nov 10 03:05:18 2009	DIFFERENTIAL TENSION	

CURVE MEASURE POINT OFFSET							
CURVE	OFFSET (m)	CURVE	OFFSET (m)	CURVE	OFFSET (m)	CURVE	OFFSET (m)
BIT	0.00	CHT	0.00	RD	3.81	TEN	0.00
CAL	0.53	GR	13.64	RS	3.81		

Presentation	: cpu1:/dat1a/pass/vul_rb2/dll_main.pdf [1:240 Scale]		
Plot Interval	: 194.539 - 893.293 Meters		
Data File 1	: F1 : cpu1:/dat1a/pass/vul_rb2/311_main.xtf		
Created On	: Nov 10 06:58:51 2009		
Company	: VULCAN MINERALS		
Well	: VULCAN INVESTCAN RED BROOK #2		
Field	: BAY ST. GEORGE BASIN		
File Interval	: 192.786 - 893.293 Meters		
Oct	: k740d		

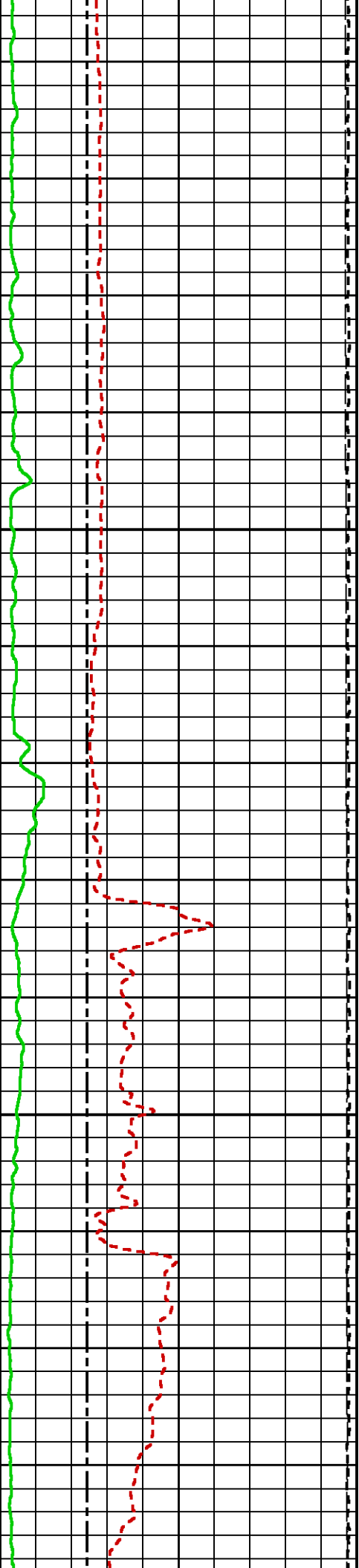


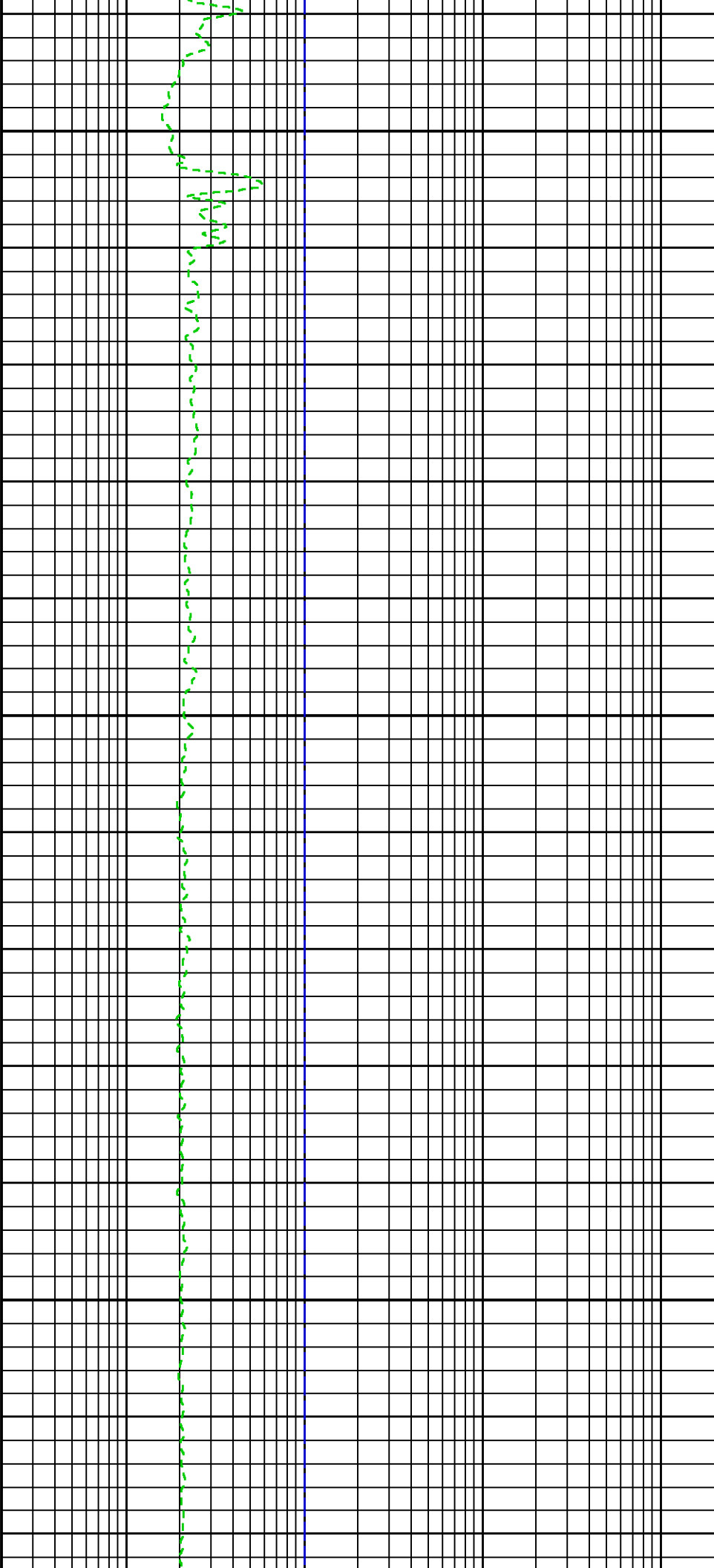




275

300

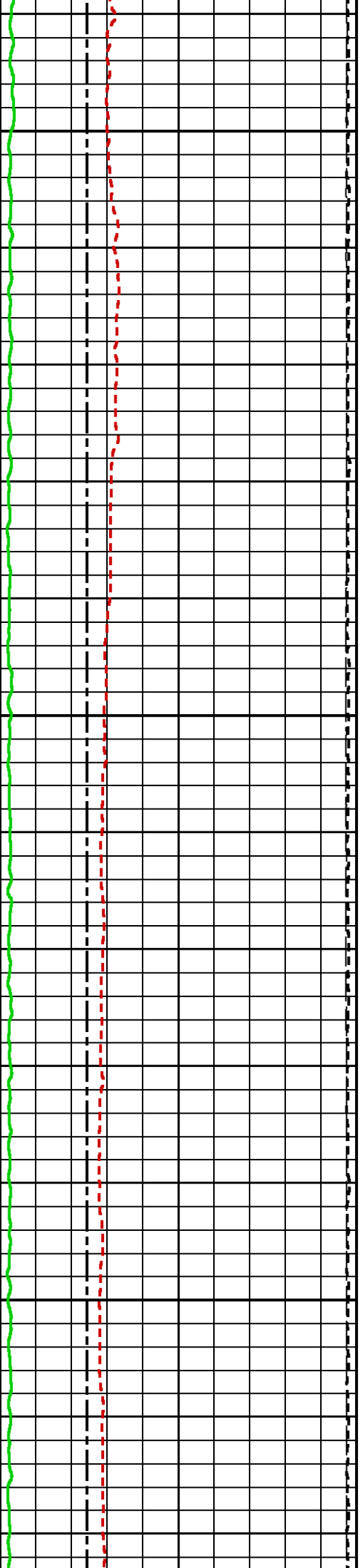


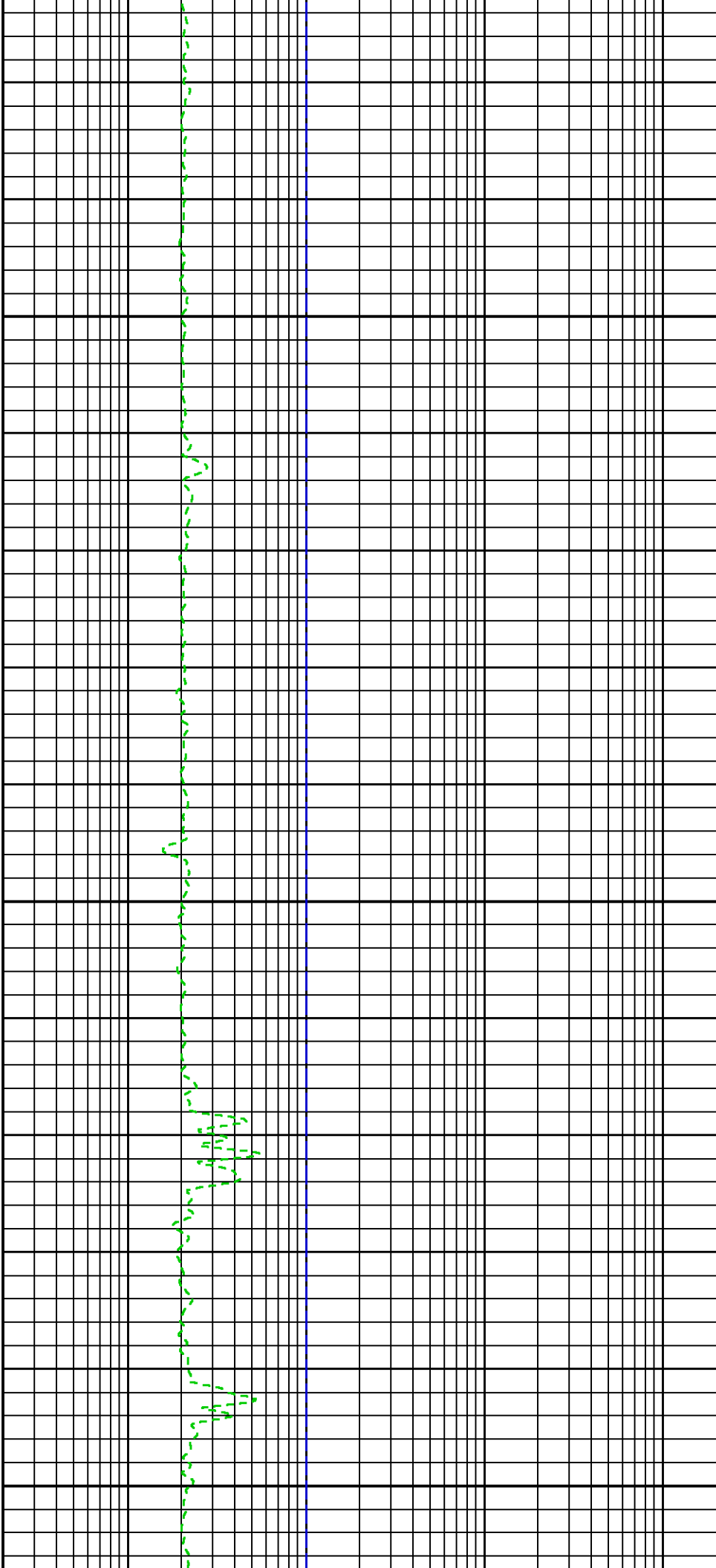


325

350

375

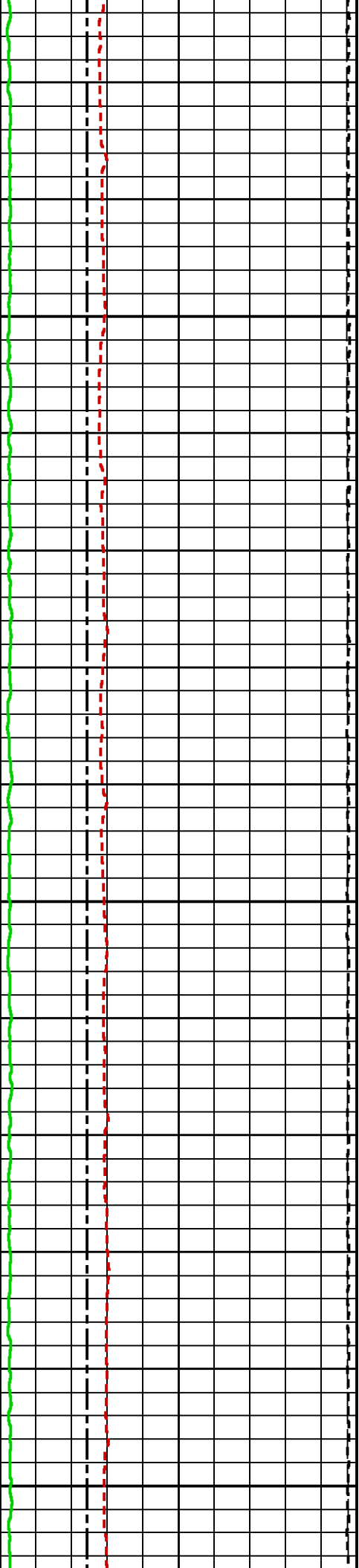


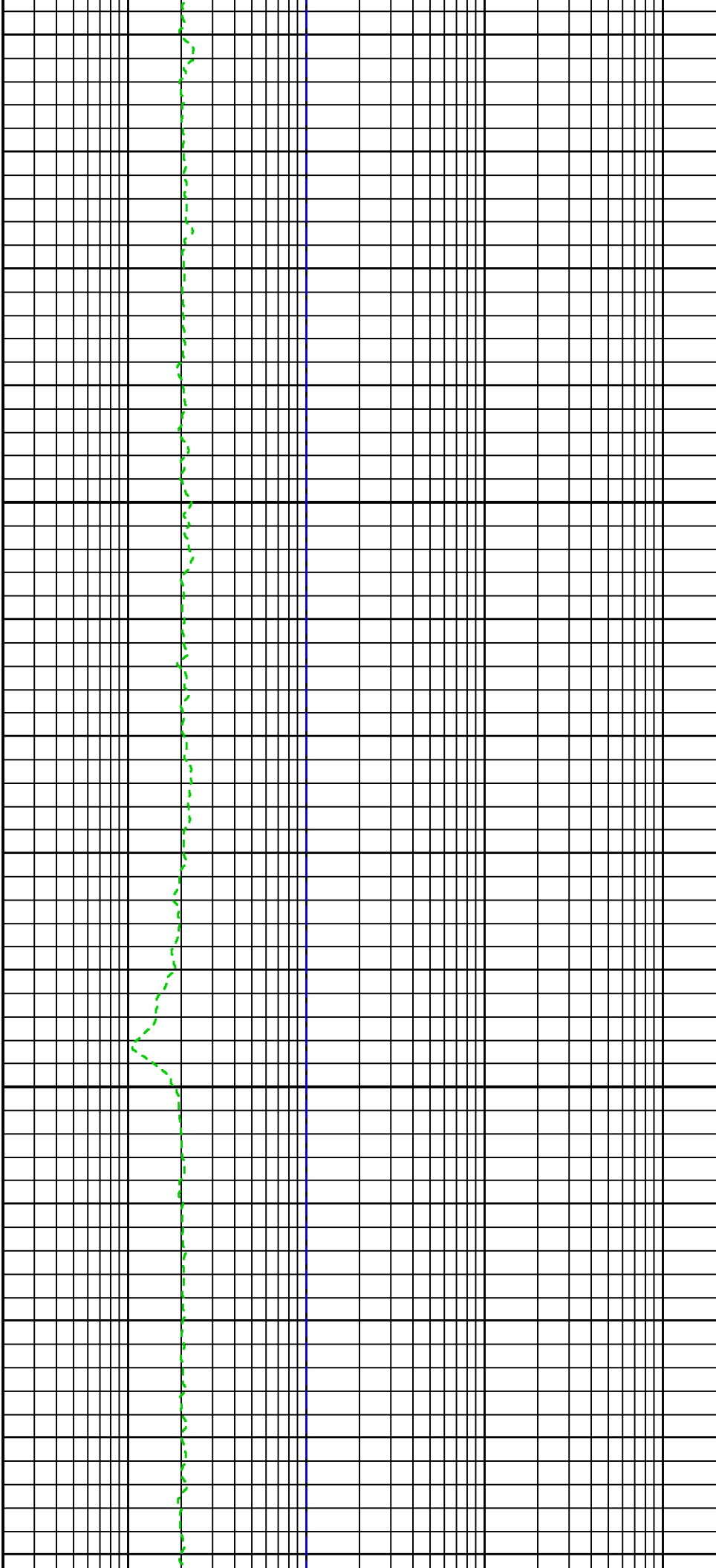


400

425

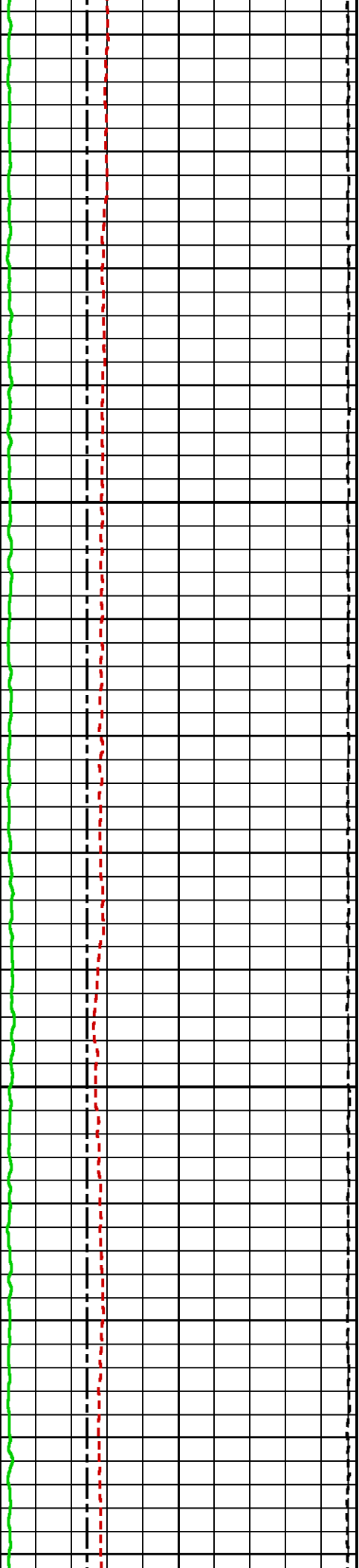
450

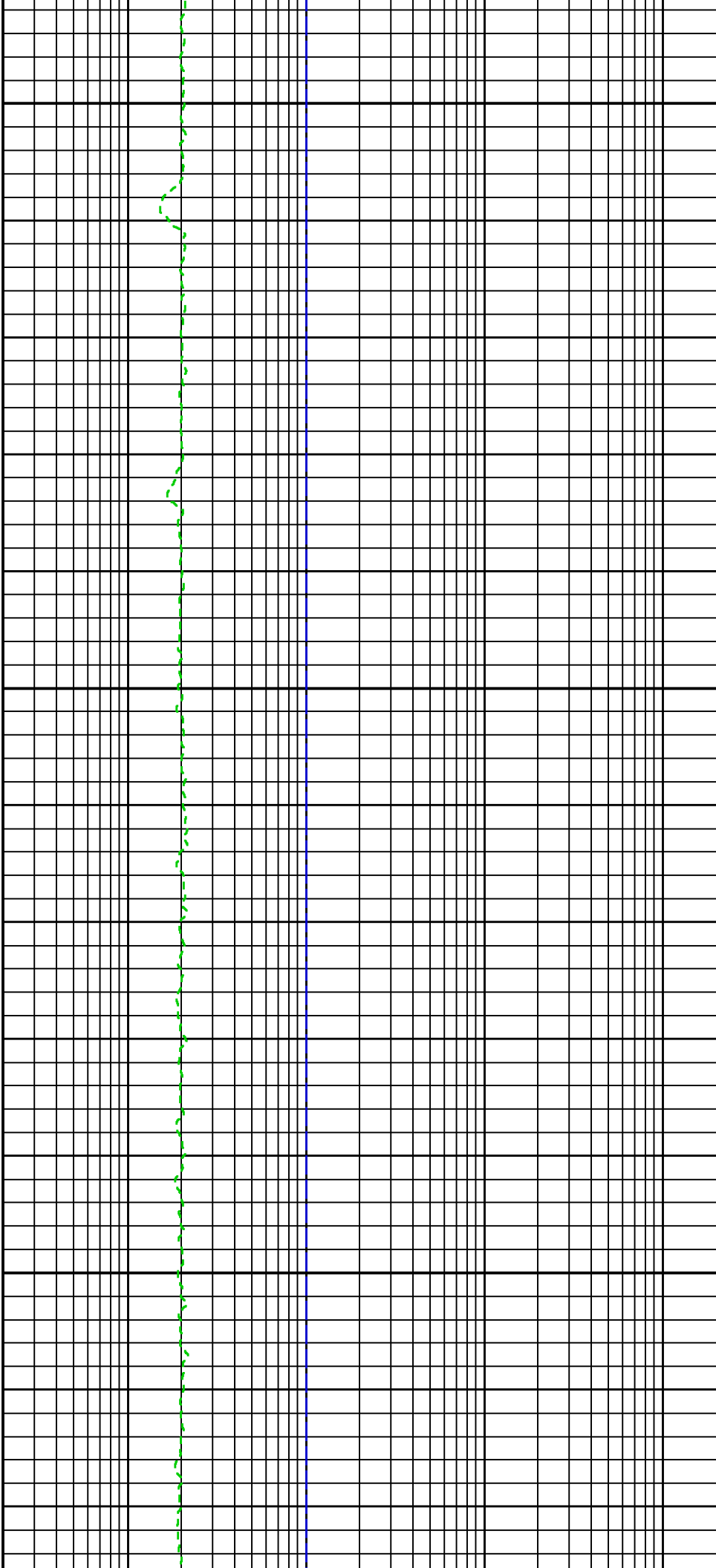




475

500

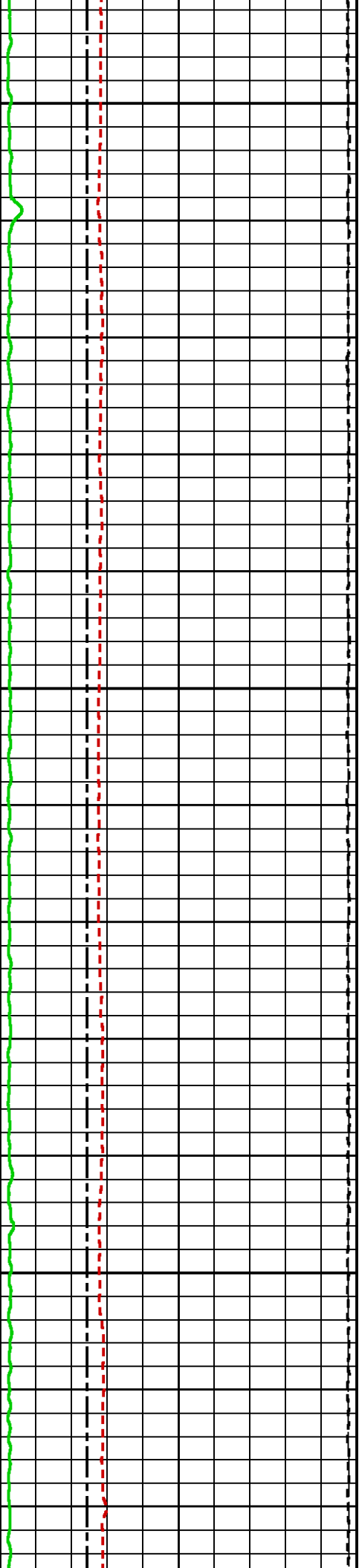


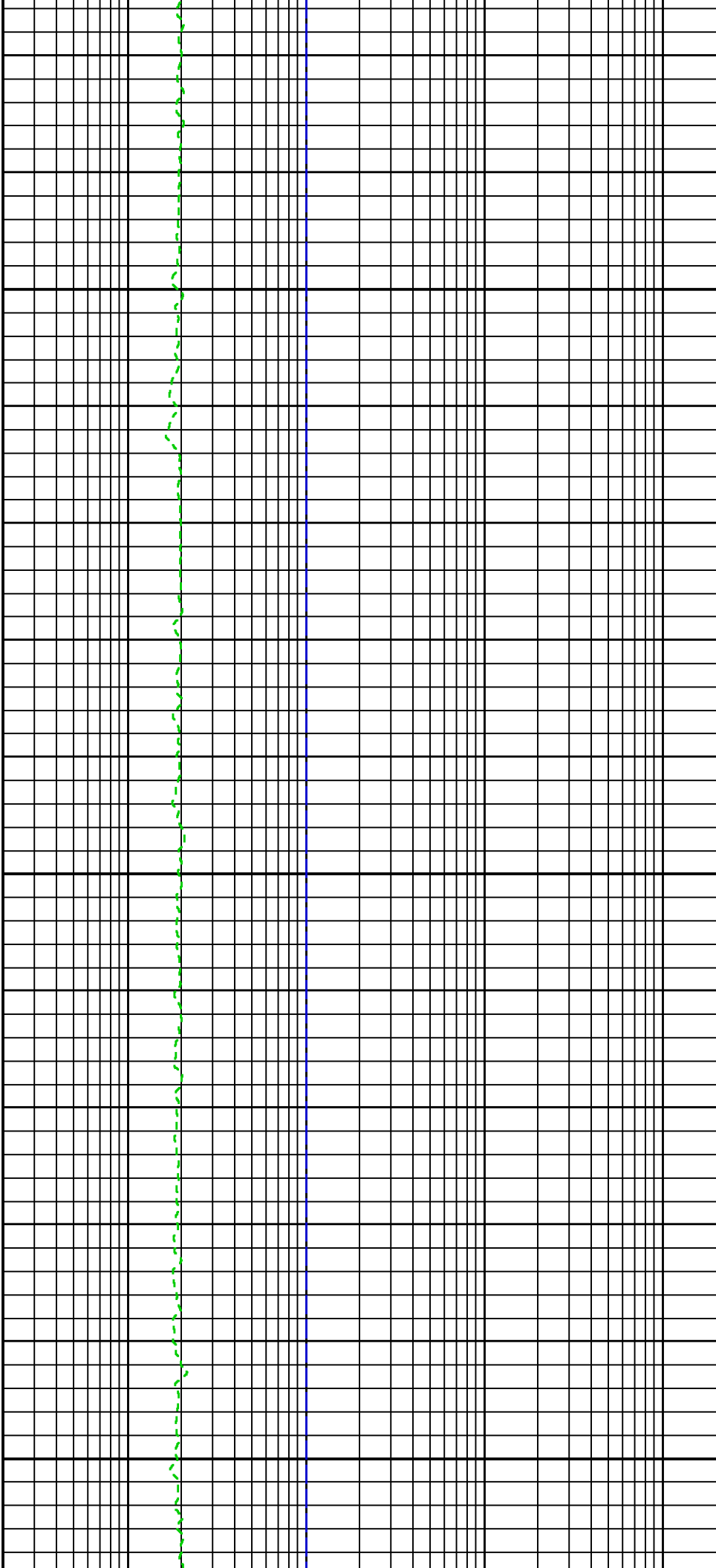


525

550

575

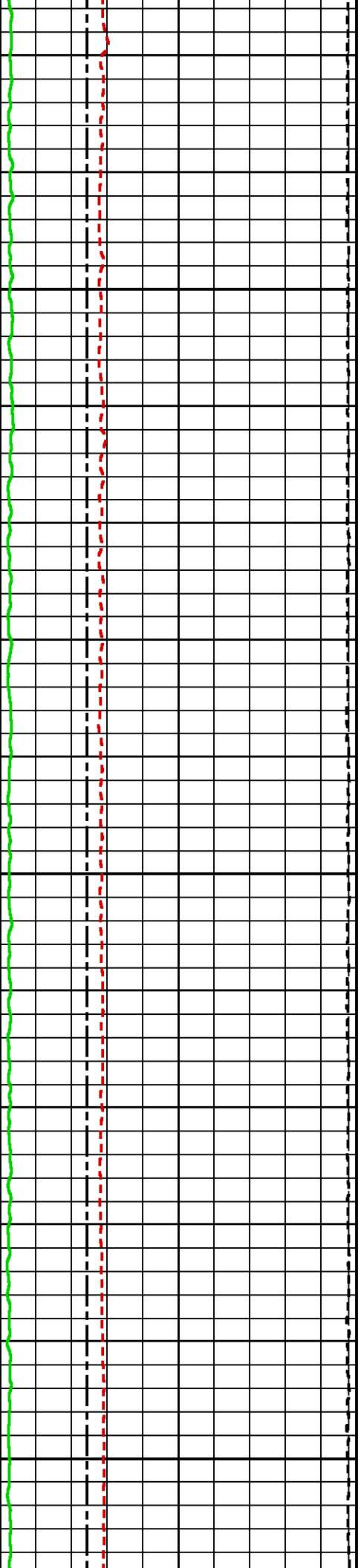


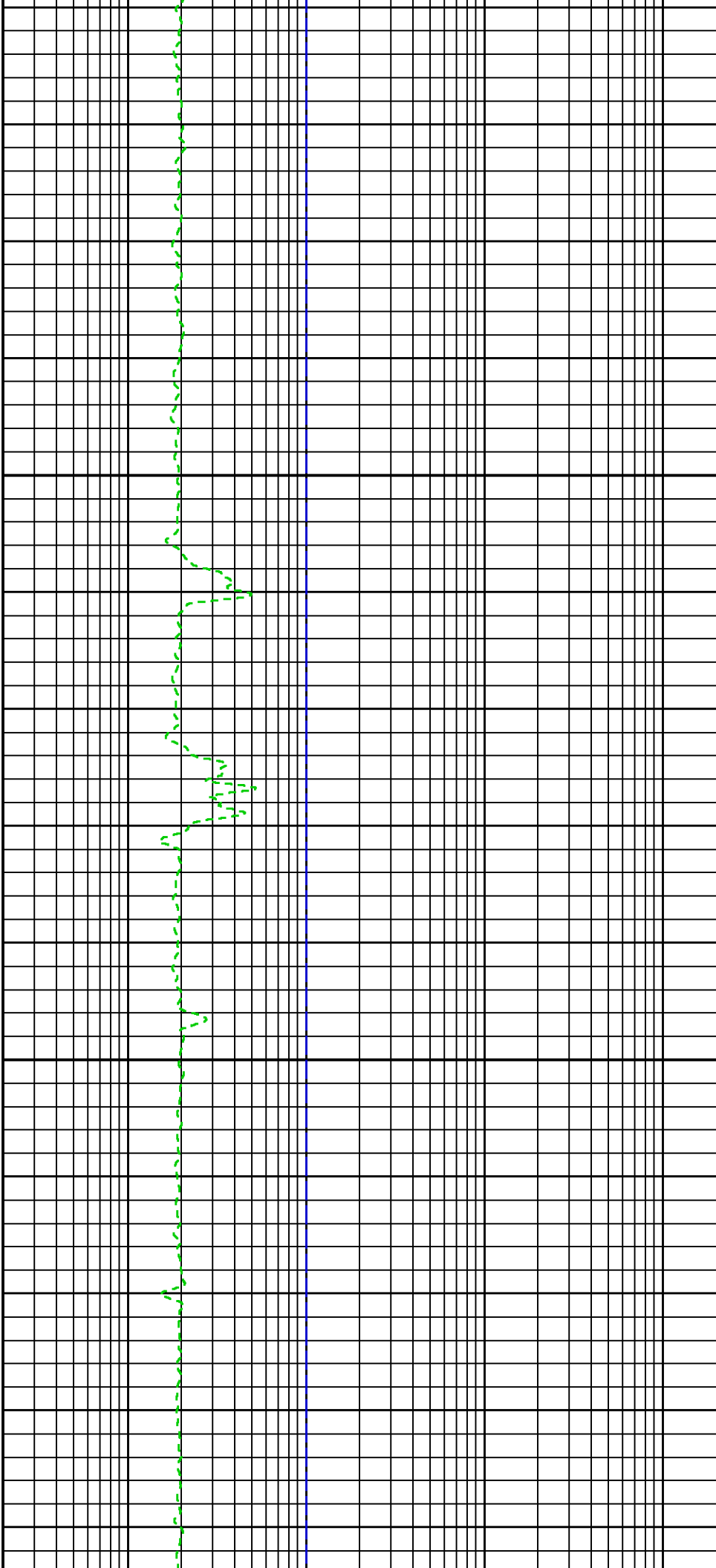


009

625

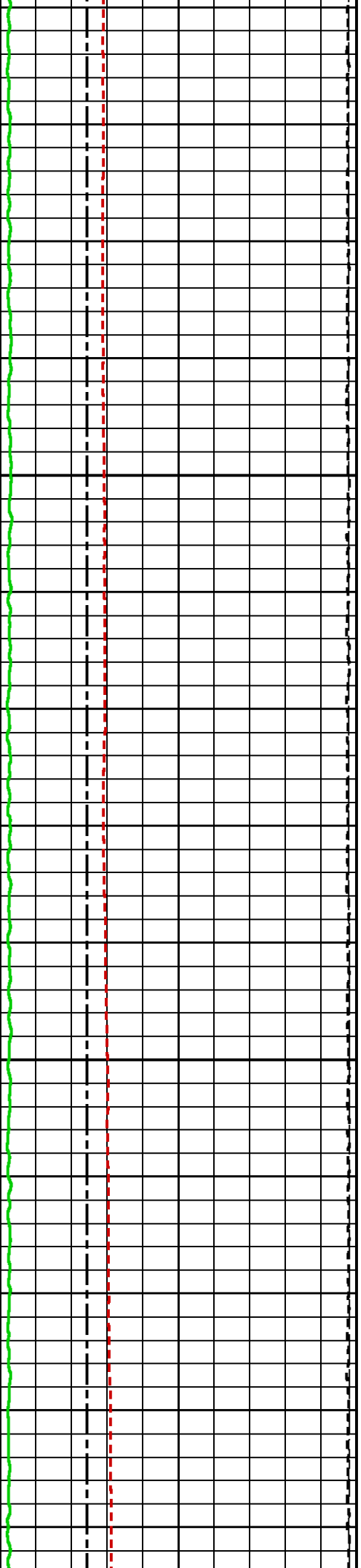
650

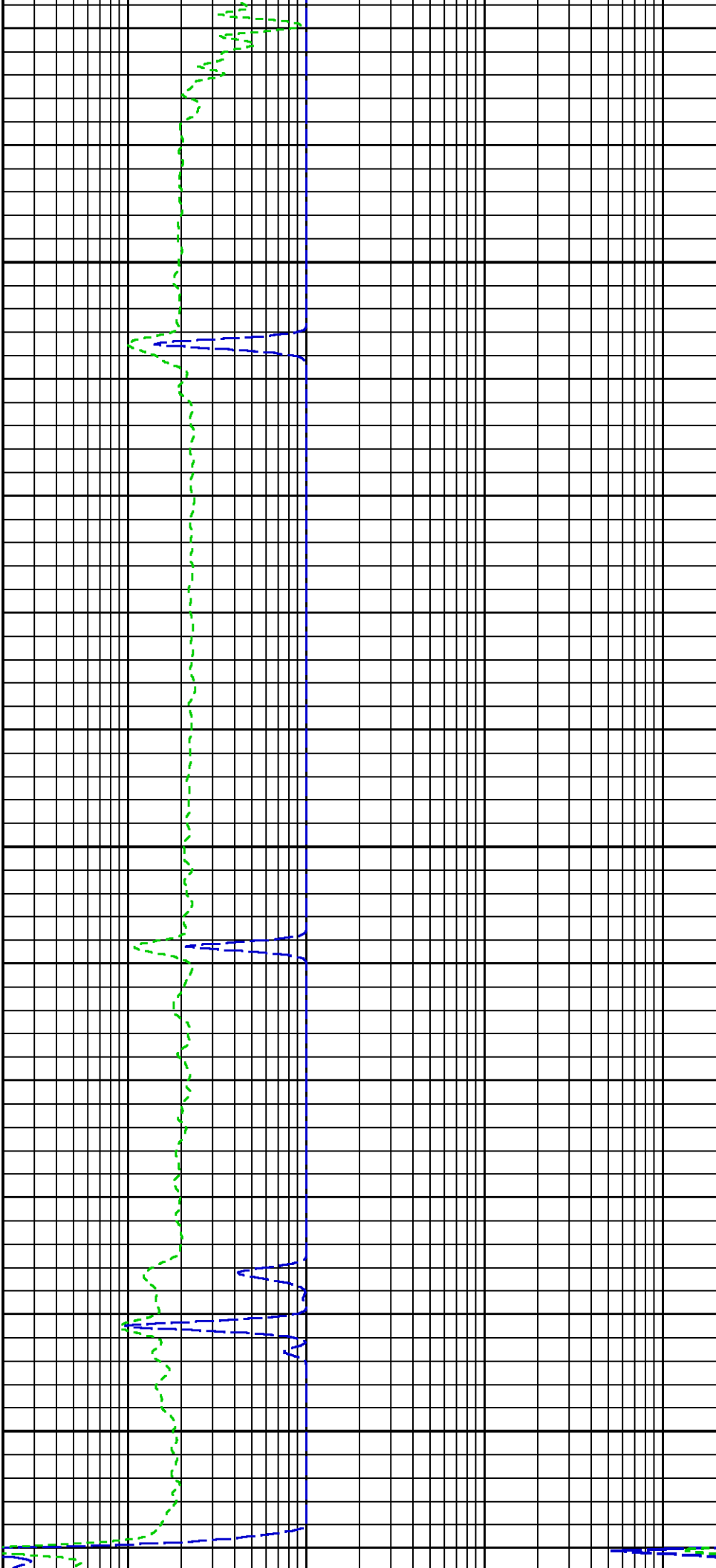




675

700

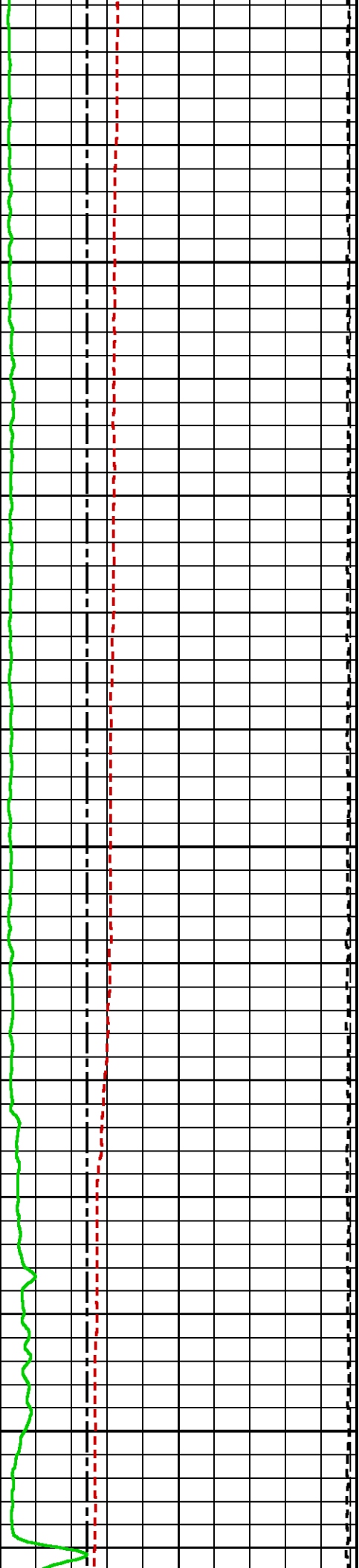


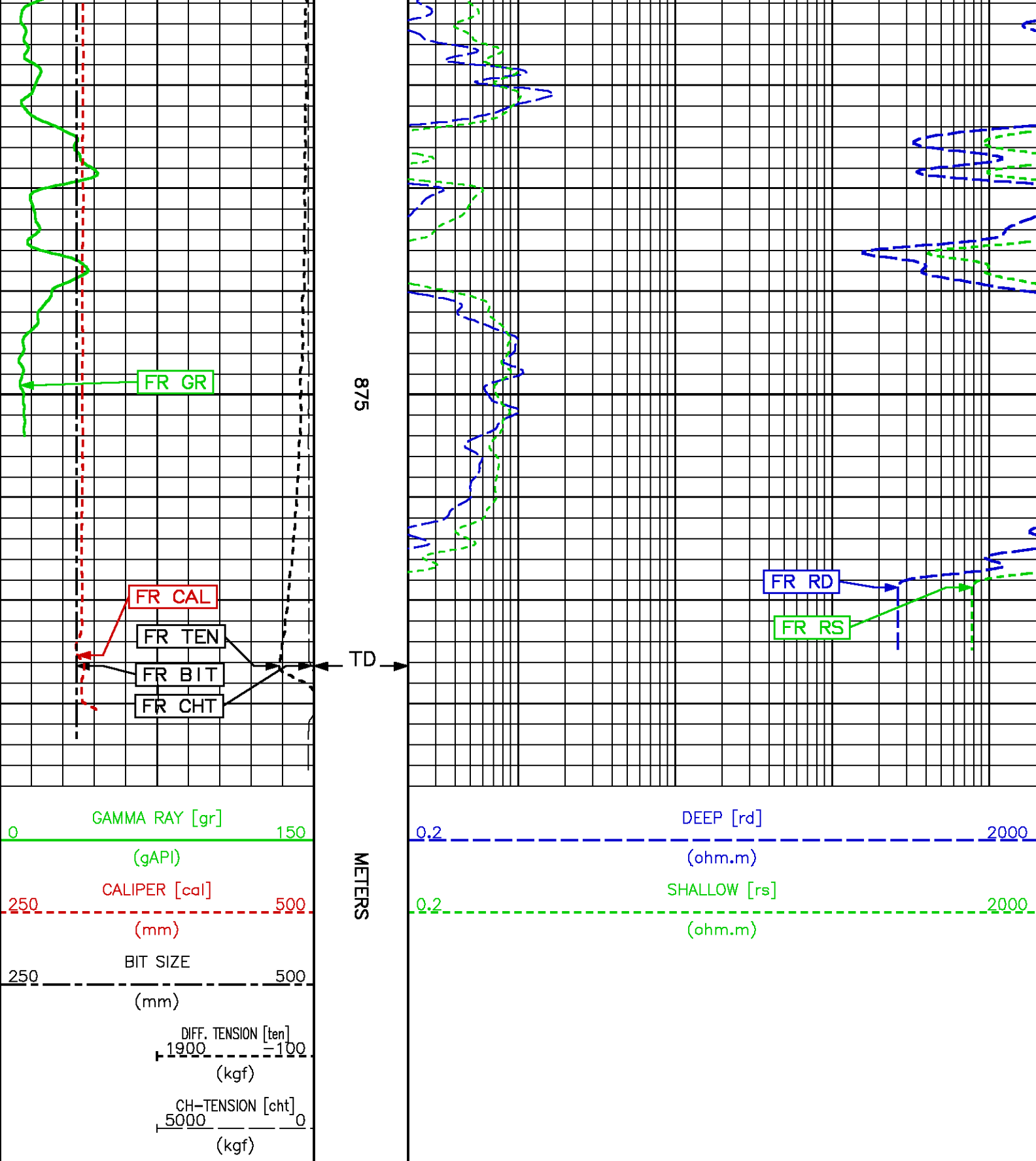


800

825

850





REPEAT LOG

Perplt /main/62

Cplot

Pdf_Cpp /main/16

Fileview 5.42

PARAMETER AND FILTER SUMMARY REPORT

FILE: /data/pass/vul_rb2/k740d01.prm
 LOGGING MODE: DEPTH DIRECTION: UP
 TOP DEPTH: 812.521 m BOTTOM DEPTH: 890.549 m

SYMMETRIC FILTER

MEASUREMENT TYPE	PARAMETER	VALUE	UNITS	INTERVAL (m)	
TENSION	FILTER ()	medium (1)		TOP	BOTTOM
GR	FILTER ()	medium (1)		"	"

BOREHOLE & CEMENT

MEASUREMENT TYPE	PARAMETER	VALUE	UNITS	INTERVAL (m)	
BIT SIZE	BIT SIZE	311.000	mm	TOP	BOTTOM

PARAMETER AND FILTER SUMMARY REPORT

FILE: /data/pass/vul_rb2/k773v01.prm
 LOGGING MODE: DEPTH DIRECTION: UP
 TOP DEPTH: 815.035 m BOTTOM DEPTH: 893.973 m

SYMMETRIC FILTER

MEASUREMENT TYPE	PARAMETER	VALUE	UNITS	INTERVAL (m)	
TENSION	FILTER ()	medium (1)		TOP	BOTTOM
GR	FILTER ()	medium (1)		"	"
DLL	FILTER ()	medium (1)		"	"

BOREHOLE & CEMENT

MEASUREMENT TYPE	PARAMETER	VALUE	UNITS	INTERVAL (m)	
BIT SIZE	BIT SIZE	311.000	mm	TOP	BOTTOM
MUD SAMPLE RESISTIVITY	MUD SAMPLE TEMP	19.9	degC	"	"
	MUD SAMPLE RES	0.070	ohm.m	"	"
BOREHOLE TEMP from GRADIENT	Known BH REF TEMP	19.9	degC	"	"
	at BH REF DEPTH	300.0	m	"	"
	with TEMP GRADIENT	0.365	0.01 degC/m	"	"
BOREHOLE CORR DIAMETER SOURCE	CALIPER/FIXED DIA. (dibh*)	USE FIXED SIZE		"	"
BOREHOLE CORR DIAMETER	FIXED DIAMETER (dibh*)	311.000	mm	"	"
BH MUD RESISTIVITY SOURCE	RMUD SOURCE	MUD SAMP DERIVED		"	"

DLL PROCESSING

MEASUREMENT TYPE	PARAMETER	VALUE	UNITS	INTERVAL (m)	
DLL BOREHOLE CORRECTION	BOREHOLE CORR	OFF		TOP	BOTTOM
	DEEP TYPE	ENHANCED		"	"
	SHALLOW TYPE	ENHANCED		"	"
	TOOL POSITION	CENTRALIZED		"	"
	DEEP CURRENT RTN.	STANDARD		"	"
	ARMOR ISOLATOR	DUAL 12' ISOLATORS		"	"
	GRONINGEN RTN. DIST	40 FT RETURN		"	"

PARAMETER AND FILTER SUMMARY REPORT

FILE: /data/pass/vul_rb2/k970a02.prm
 LOGGING MODE: DEPTH DIRECTION: UP
 TOP DEPTH: 807.478 m BOTTOM DEPTH: 892.020 m

SYMMETRIC FILTER

MEASUREMENT TYPE	PARAMETER	VALUE	UNITS	INTERVAL (m)	
CHT	FILTER ()	medium (1)		TOP	BOTTOM
GR MED RES	FILTER ()	medium (1)		"	"
TENSION	FILTER ()	medium (1)		"	"

BOREHOLE & CEMENT

MEASUREMENT TYPE	PARAMETER	VALUE	UNITS	INTERVAL (m)	
X-Y COMBINED CALIPER PROCESSING-FOCM5Y	Caliper - FOCUS	X-Axis		TOP	BOTTOM
BIT SIZE	BIT SIZE	311.000	mm	''	''

ACCELERATION PROCESSING

MEASUREMENT TYPE	PARAMETER	VALUE	UNITS	INTERVAL (m)	
ACCEL CORR SWITCH	ACCEL DEPTH CORR	CORRECTION ON		TOP	BOTTOM

CURVE DESCRIPTION REPORT

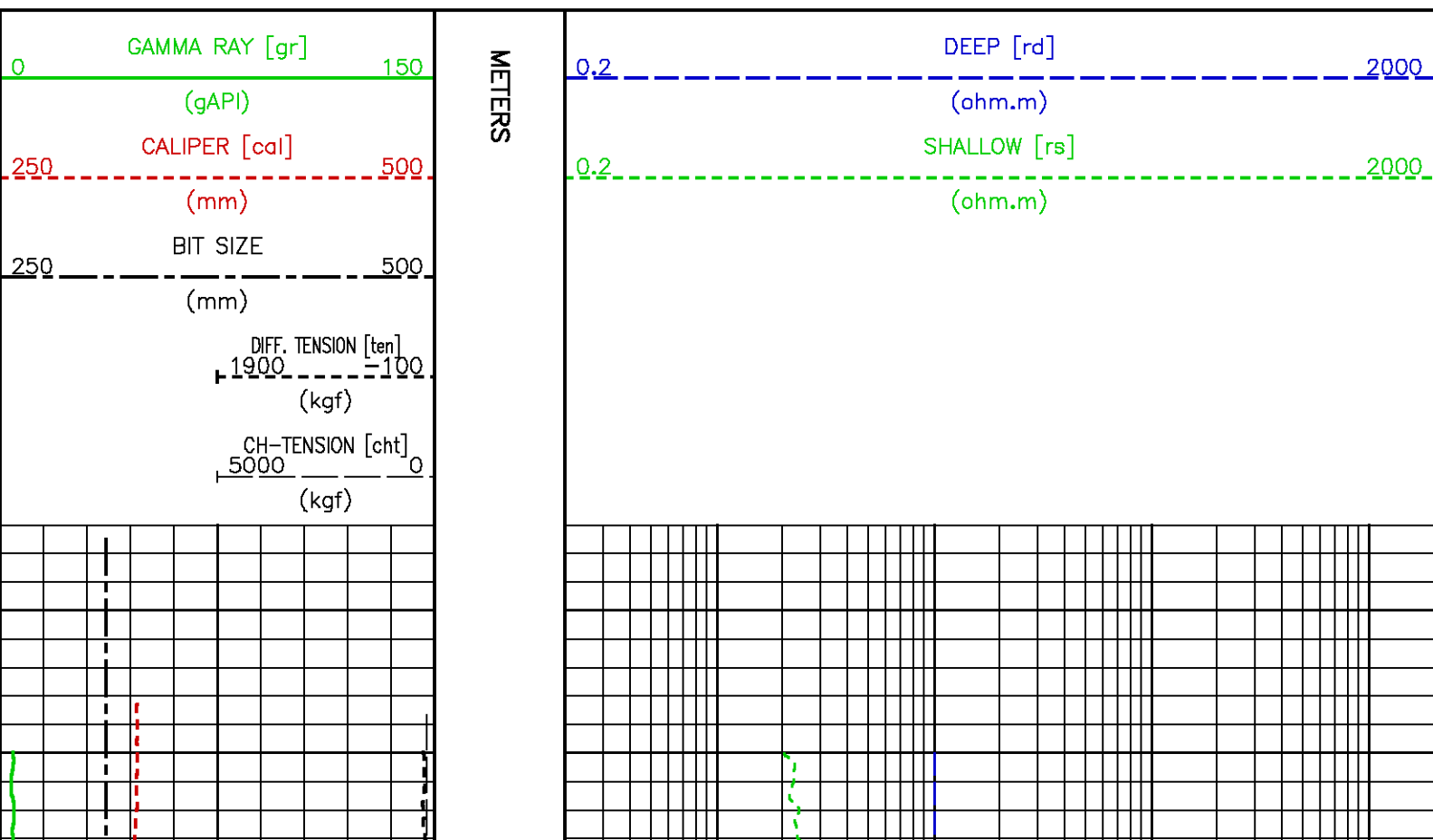
CURVE NAME	CURVE ALIAS	CREATION DATE	CURVE DESCRIPTION
F1:BIT	BIT	Nov 10 02:46:03 2009	BIT SIZE
F1:CAL	CAL	Nov 10 06:43:56 2009	CALIPER
F1:CHT	CHT	Nov 10 06:43:56 2009	CABLE HEAD TENSION
F1:GR	GR	Nov 10 02:46:03 2009	GAMMA RAY
F1:RD	RD	Nov 10 09:31:52 2009	DEEP RESISTIVITY
F1:RS	RS	Nov 10 09:31:52 2009	SHALLOW RESISTIVITY
F1:TEN	TEN	Nov 10 02:46:03 2009	DIFFERENTIAL TENSION

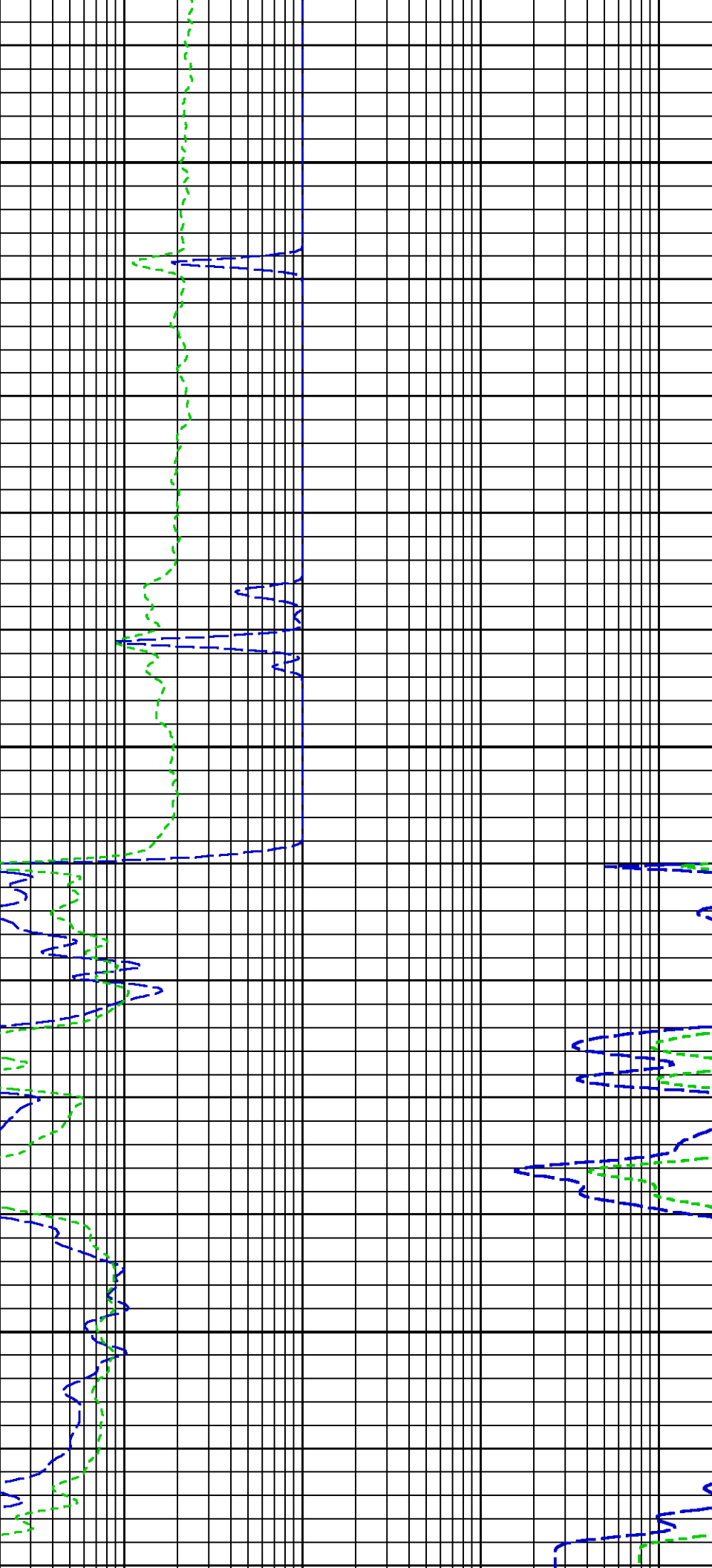
CURVE MEASURE POINT OFFSET

CURVE	OFFSET (m)	CURVE	OFFSET (m)	CURVE	OFFSET (m)	CURVE	OFFSET (m)
BIT	0.00	CHT	0.00	RD	3.81	TEN	0.00
CAL	0.53	GR	13.64	RS	3.81		

Presentation : cpu1:/dat1a/pass/vul_rb2/dll_rpt.pdf [1:240 Scale]
 Plot Interval : 797.357 - 893.293 Meters

Data File 1 : F1 : cpu1:/dat1a/pass/vul_rb2/311_rpt.xtf
 Created On : Nov 10 06:43:56 2009
 Company : VULCAN MINERALS
 Well : VULCAN INVESTCAN RED BROOK #2
 Field : BAY ST. GEORGE BASIN
 File Interval : 797.357 - 893.293 Meters
 Oct : k740d

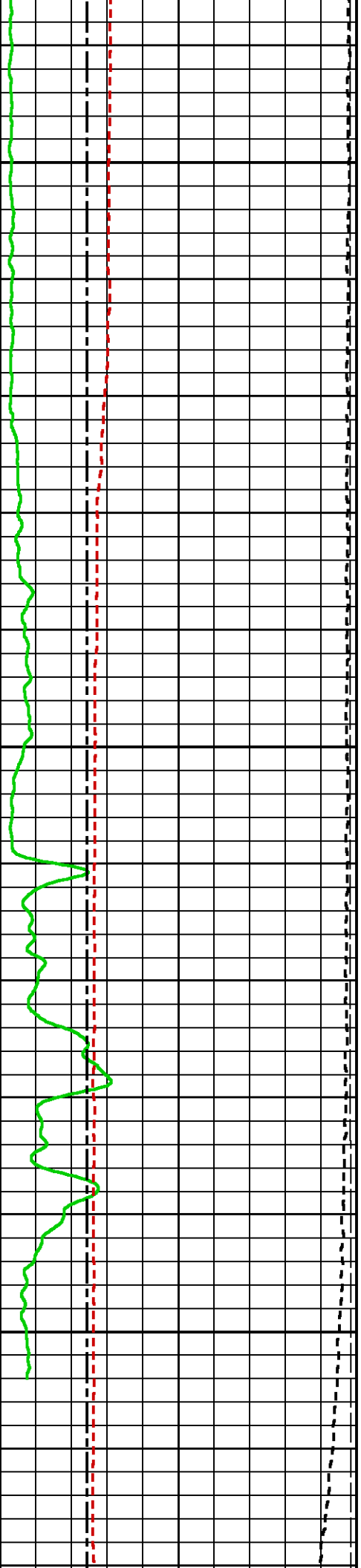


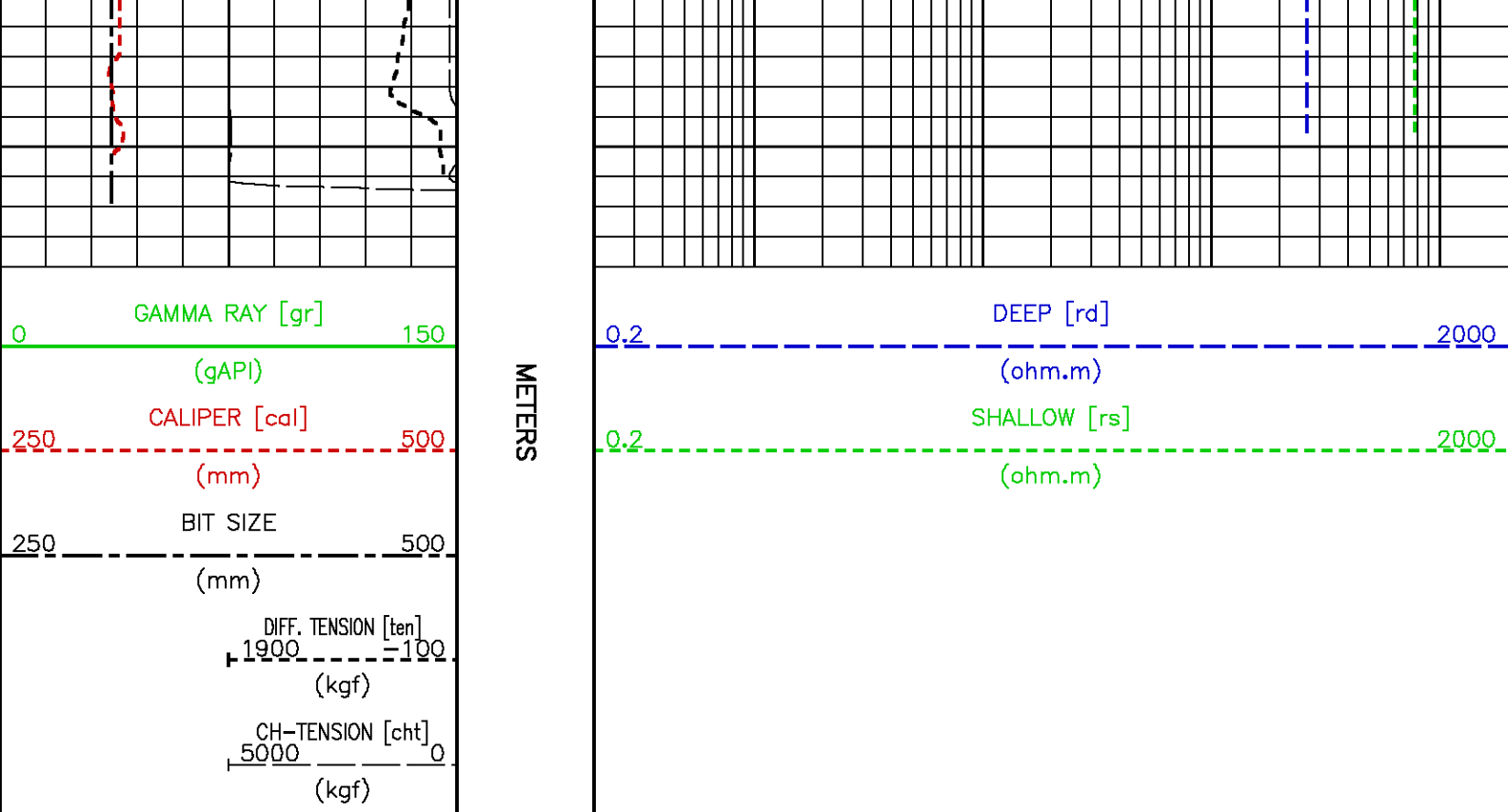


825

850

875





CALIBRATION / VERIFICATION SUMMARY

Source File: /dat1a/pass/vul_rb2/k773v.tp1

DLL PRIMARY CALIBRATION SUMMARY

TOOL #: 1239MA 185440

DATE/TIME PERFORMED: Tue Nov 10 09:27:07 2009

UNIT #: 3885TA HL4126

	Sig Low (raw)	Sig High (raw)	Scale Add	Scale Mult	Engr Low (ohm.m)	Engr High (ohm.m)
ED Deep Volt	326.1	3994.1				
ID Deep Curr	1731.1	22.4				
ES Shallow Volt	365.0	3210.4				
IS Shallow Curr	1220.8	10.5				
RD Deep Resist			-0.00001	0.01983	9.5	9500.0
RS Shallow Resist			0.00002	0.01880	15.9	11700.0

DLL AFTER LOG VERIFICATION SUMMARY

TOOL #: 1239MA 185440 DATE/TIME PERFORMED: Tue Nov 10 10:40:09 2009 DAYS SINCE CAL: 0

UNIT #: 3885TA HL4126

	Sig Low (raw)	Sig High (raw)	Scale Add	Scale Mult	Engr Low (ohm.m)	Engr High (ohm.m)
ED Deep Volt	331.3	3995.4				
ID Deep Curr	1729.2	22.5				
ES Shallow Volt	365.8	3210.6				
IS Shallow Curr	1222.8	10.6				
RD Deep Resist			-0.00001	0.01983	9.7 9.0 10.0	9457.8 8000.0 11000.0
RS Shallow Resist			0.00002	0.01880	15.9 15.4 18.4	11656.5 10200.0 13200.0

CALIBRATION / VERIFICATION SUMMARY

Source File: /dat1a/pass/vul_rb2/k740d.tp1

GR PRIMARY CALIBRATION SUMMARY

TOOL #: 1329XA 153116

DATE/TIME PERFORMED: Thu Nov 5 13:51:18 2009

UNIT #: 3885TA HL4126

CALB JIG #: 4702NK WA-724

	BACKGROUND (cts/s)	CALBRTR ON (cts/s)	CR DIFF (cts/s)	MULT	BACKGROUND (gAPI)	CALBRTR ON (gAPI)	CALBRTR (gAPI)
GR	182.89	1033.18	850.3 830.0 960.0	0.176	32.26	182.26	150

GR PRIMARY VERIFICATION SUMMARY

TOOL #: 1329XA 153116

DATE/TIME PERFORMED: Thu Nov 5 13:53:49 2009

UNIT #: 3885TA HL4126

VERI JIG #: 4702NK WA-724

	BACKGROUND (cts/s)	CALBRTR ON (cts/s)	MULT	BACKGROUND (gAPI)	CALBRTR ON (gAPI)	DIFF. (gAPI)
GR	172.27	1033.27	0.176	31.72	182.17	150.45

GR	179.67	1032.67	0.176	31.70	182.17	150.48
						140.00 180.00

GR BEFORE LOG VERIFICATION SUMMARY

TOOL #: 1329XA 153116 DATE/TIME PERFORMED: Tue Nov 10 02:13:12 2009 DAYS SINCE CAL: 4

UNIT #: 3885TA HL4126 VERI JIG #: 4702NK WA-724


	BACKGROUND (cts/s)	CALBRTR ON (cts/s)	MULT	BACKGROUND (gAPI)	CALBRTR ON (gAPI)	DIFF. (gAPI)
GR	103.78	949.18	0.176	18.31	167.45	149.14
						140.48 180.48

GR AFTER LOG VERIFICATION SUMMARY

TOOL #: 1329XA 153116 DATE/TIME PERFORMED: Tue Nov 10 05:05:28 2009 DAYS SINCE CAL: 4

UNIT #: 3885TA HL4126 VERI JIG #: 4702NK WA-724

	BACKGROUND (cts/s)	CALBRTR ON (cts/s)	MULT	BACKGROUND (gAPI)	CALBRTR ON (gAPI)	DIFF. (gAPI)
GR	106.60	944.82	0.176	18.81	166.68	147.87
						139.14 159.14

 Baker Atlas	COMPANY <u>VULCAN MINERALS INC.</u> WELL <u>VULCAN INVESTCAN RED BROOK #2</u> FIELD <u>BAY ST.GEORGE BASIN</u> PROVINCE <u>NEWFOUNDLAND AND LABRADOR</u>	FILE NO: _____ API NO: _____		
	LOCATION: BH LOC. LSD: LAT <u>48.2679591667</u> LONG <u>-58.7501141667</u>	ELEVATIONS: KB <u>61.8 M</u> DF _____ GL <u>55.5 M</u>	UID: _____ N/A LICENSE: _____ ADW 2009-116-03-	
		DATE <u>09-NOV-2009</u>		

ECLIPS